



LABS
Life And Building Safety

What is the Life and Building Safety Initiative (LABS)

LABS is a collaborative program by a group of brands focused on shared assessments and a shared standard for Life and Building Safety.

LABS organizes activities around identifying and solving risks related to:



Fire safety



Electrical safety



Structural safety

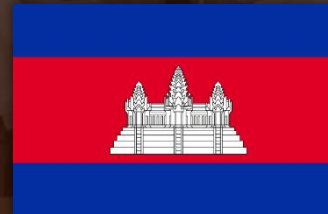
INDONESIA



INDIA



CAMBODIA



VIETNAM



Why is LABS needed?

Accidents reported in fashion industry supply chain in India

149

Total fires reported

216

Causalities
(82 deaths
& 134 Injuries)

Causes and Effect

Most fires reported occurred due to electrical issues (such as short circuit in electrical panels/circuits)

Accidents reported in fashion industry supply chain in Vietnam

23

(22 fires and 1 structural collapse reported)

51,000

Sq. mt. of infrastructure damage

Causes and Effect

Most fires reported occurred due to electrical issues (such as short circuit in electrical panels/circuits)

Accidents reported in fashion industry supply chain in Indonesia

12

Total fires reported

81

Causalities
(4 deaths
& 78 Injuries)

Causes and Effect

Most fires reported occurred due to electrical issues (such as short circuit in electrical panels/circuits)

Accidents reported in fashion industry supply chain in Cambodia

25

Total fires reported

25,000

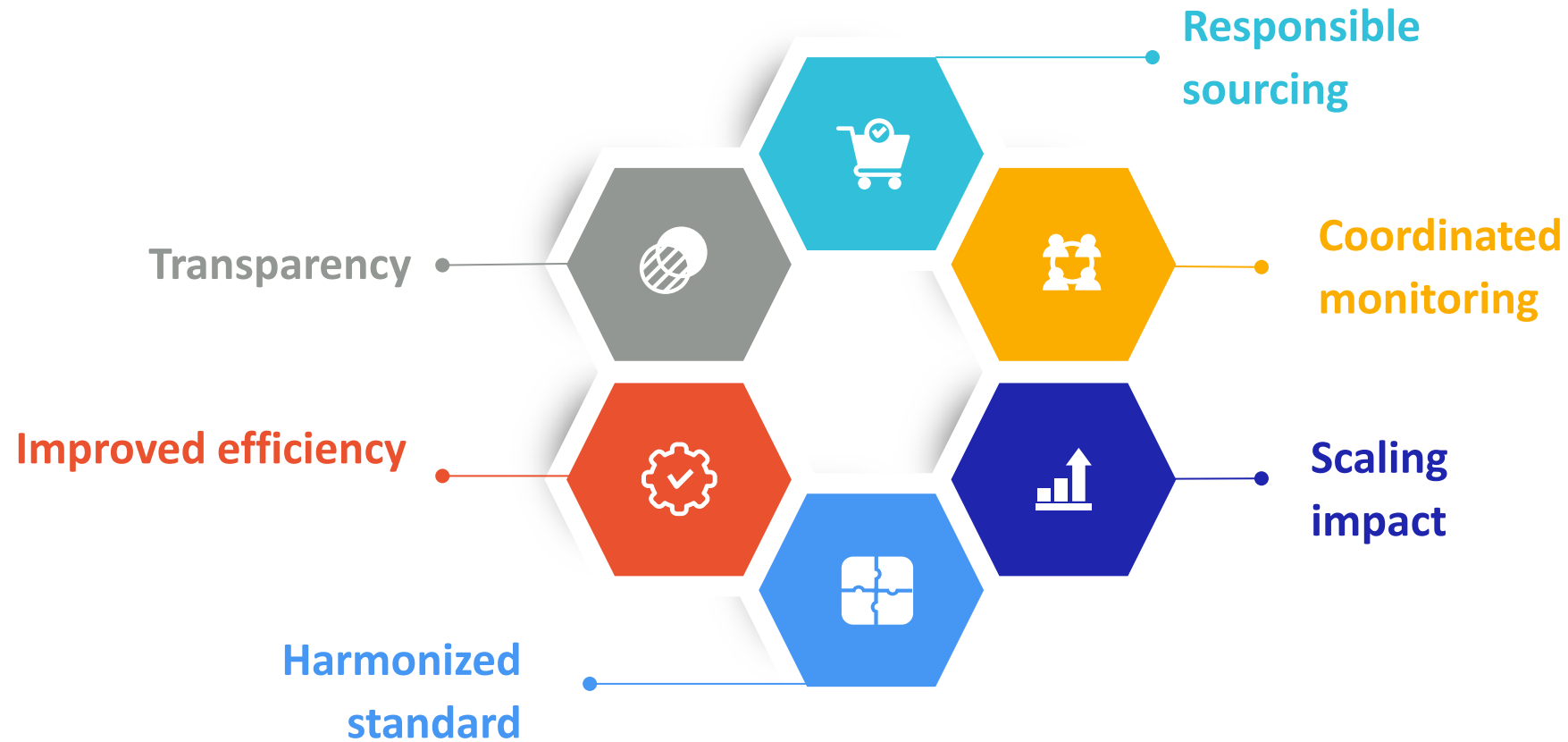
Sqm of infrastructure damaged

Causes and Effect

Most fires reported occurred due to electrical issues (such as short circuit in electrical panels/circuits)

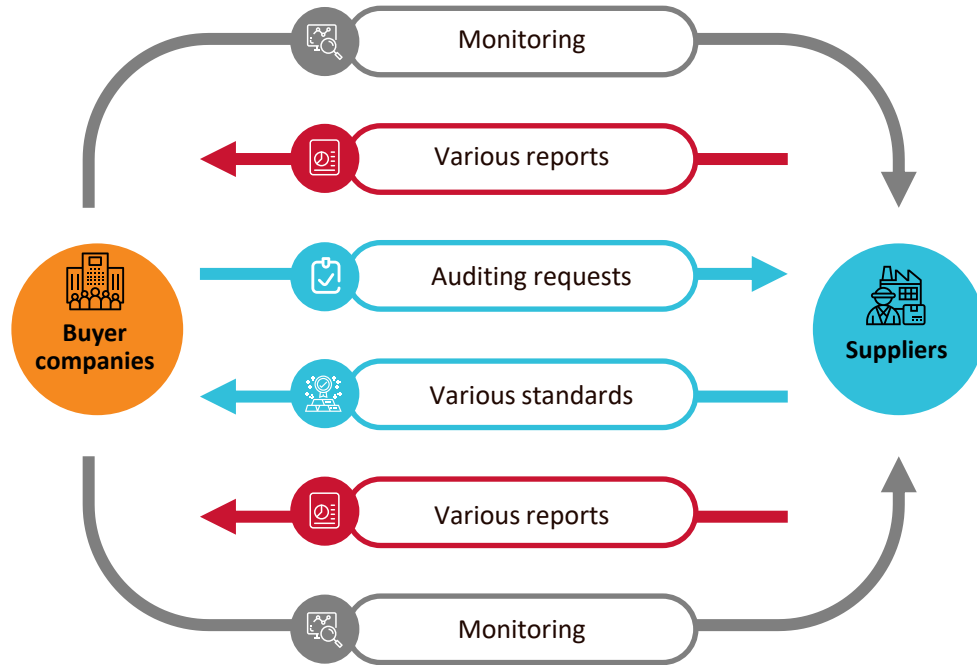


How does LABS support brands in Creating Socially Responsible Supply Chains



Efficiency through Standard harmonization

Situation before LABS



Challenges



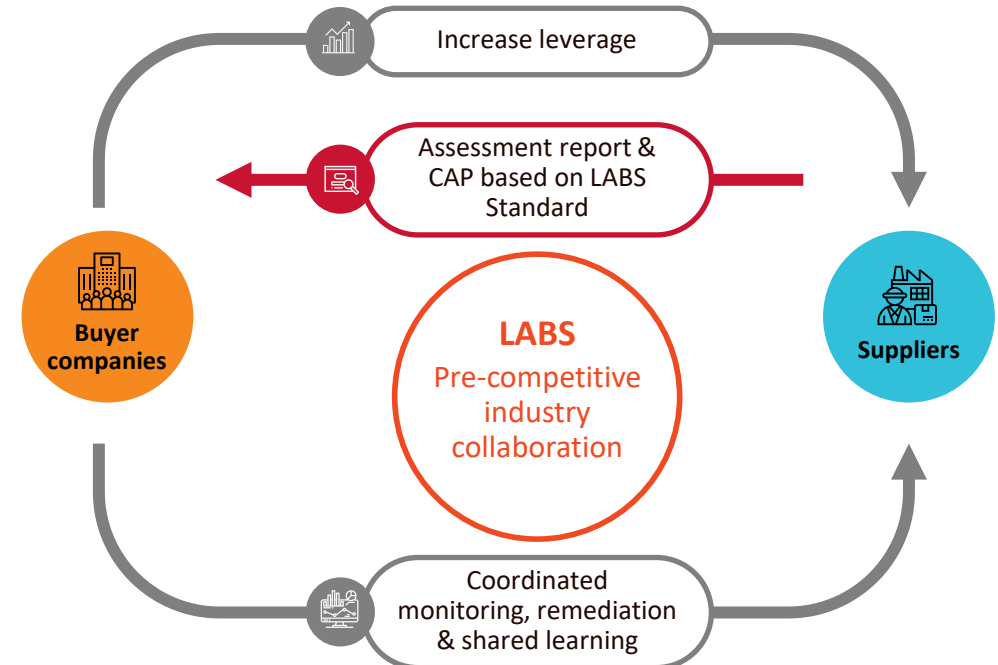
Inefficient

Expensive

Different standards

Lack of (effective) monitoring

Situation with LABS



Benefits with LABS



Greater efficiency & scale

Harmonized standard

High impact

Coordinated monitoring

How does LABS work



Supported with a Public-Private Dialogue and by other constructive partners, to create in-country capacity and long-term local ownership

Additional program attributes



Supported by global brands



Transparency



Building on international standards and best practices

Brand participants



Gap Inc.



Walmart



amazon

National Stakeholder Committees

LABS works to create a sustainable model building local capacity, shared responsibilities and optimizing leverage to drive and sustain progress around safety.

National Stakeholder Committees

Engaging stakeholders in country

- ▶ Working with local government entities on a continuous basis
- ▶ Currently co-creating projects with Ministry of Construction of Vietnam



Governance Outcomes

(Sep 2019 - Till Date)

Local & National Ownership

- ▶ Adoption of LABS Standards into **Vietnam Government's** Guidelines
- ▶ **04** National Stakeholder Committees established
- ▶ LABS Standards, Indonesia handed over to the **Directorate General of Construction, Ministry of Public Works and Public Housing of the Republic of Indonesia** for review and adaptation
- ▶ MOU signed with **Jakarta Disaster Management Authority** to support them in development and enhancement of building assessment module through adaptation of relevant sections of LABS Standards
- ▶ LABS Methodology & Standards published on the **DKI Jakarta Regional Disaster Management Agency's** official website.
- ▶ **Technical guidance on fire safety assessment & Toolbox** added on official website of **Vietnam Leather and Footwear Association (LEFASO)** and **Vietnam Textile and Garment Association (VITAS)**
- ▶ Engagements with **Ministry of State Secretariat, Indonesia, Vice President of Indonesia**, to explore ways of potential collaboration towards safety and embed building safety with long-term local/national ownership
- ▶ LABS Standards, Cambodia handed over to the review committee of **Ministry of Land Management, Urban Planning and Construction** for adaptation



Tangible Outcomes: Field Level Impact

(Sep 2019 - Till Date)

Enabling Technical Environment

LABS associated firms:

- 11 Inspection firms
- 4 Quality Assurance firms
- 8 Safety Training firms

Engineers and trainers trained:

- 50 Engineers (each with a minimum of 10 years' experience)
- 17 Trainers

Standards for **04 countries** established

Overall remediation achieved: **80%**

(**9,800** issues remediated)

19,762 people trained including supervisors, machine operators, electricians, boiler operators, compliance in-charges

Program operations



04 Countries



592 Factories onboarded



568 Assessments conducted



1,105 Safety Trainings delivered



1,154,778 Workers reached

Average no. of issues identified per factory: **49**

17

Fire

Eg: Lack of fire detection and firefighting system

21

Electrical

Eg: High temperature up to 222°C observed in electrical panel

11

Structural

Eg: Excessive overloading on rooftop and floors

Follow-up Visits conducted: **1,535**

Factories Graduated: **142**



LABS Interventions Resulting in Successful Remediations

Identified



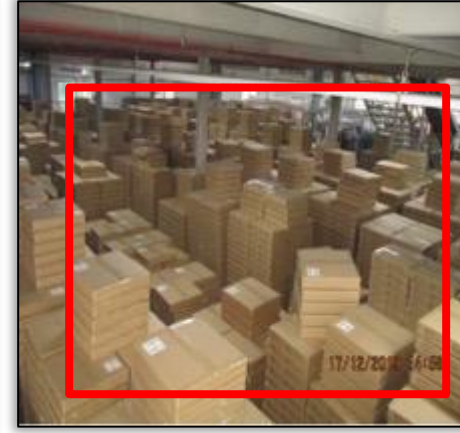
Fire rated doors not installed



Exterior exit stairs not clear of building interior by 3.1 meter



Illuminated exit signs not available



Temporary storage not arranged as per requirements of LABS Standard



Smoke detectors and heat detectors not installed on the ceiling or roof

Remediated



02-hour fire rated door provided



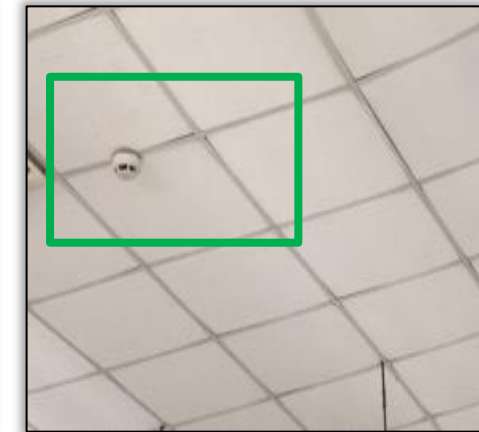
Exterior exit stairs separated from building interior by 3.1 m beyond the ends of the stair structure



illuminated exit signs provided above each emergency exit door



Temporary storage arranged in line with LABS Standards



Smoke detectors installed as per standards

Safety Training & Building Safety Helpline



Through associated safety training firms, LABS trains staff members and key safety personnel to build up their skills around flagging safety issues, evacuation, and create additional awareness around structural, electrical, and fire safety proficiency.



LABS Helpline provides an opportunity to workers to directly report issues related to fire, electrical and structural safety issues in their workplace.



Contributions from Brands

Full Participants become a part of LABS Steering Committee – that has a key role in building program strategy.

Contributions		
Brand Contributions		
	Full Participation	Single-country Participation
T3 (Over 7 bn apparel & footwear turnover) fixed dues	€ 120,000	€ 45,000
T2 (Between 3-7 bn) fixed dues	€ 84,000	€ 31,500
T1 (Below 3 bn) fixed dues	€ 48,000	€ 22,500
Brand per factory contribution	€ 250	€ 250

Next to the abovementioned contributions, new Brand joiners contribute to a one-time contribution (50% of the first annual contribution)

Revised contributions effective starting January 1, 2025.

Contributions from Factories

Overview

LABS fee

2,600

More than 2000 workers

1,800

Between 501 and 2000 workers

1,550

500 workers or less

Assessment cost

2,400

Factory assessment cost

2,300

CAP sign-off, Design sign-off & CAP Closure

Includes

- ✓ Access to the LABS platform
- ✓ Safety training
- ✓ Access to the Helpline

Separate payment

- ✗ Assessment fee
(Cost of a LABS assessment can be kept lower resulting from high volume for the initiative as a whole, whilst offering higher quality)

All contributions are in Euro

A woman with dark hair tied back, wearing a white long-sleeved button-down shirt over an orange t-shirt and a grey surgical face mask, is focused on her work in a garment factory. She is handling a piece of olive green fabric. The background is a busy factory floor with other workers and sewing machines. A large black semi-circle with a geometric pattern is overlaid on the left side of the image, containing the text 'THANK YOU' in orange capital letters.

THANK
YOU